

1 아이고 [aigo] **Exclamation**
 Similar to 'OMG' or 'oh dear'. Also written 아이구 [aigoo] in some dialects.

2 멘붕 [men-boong] **Slang**
 A compound word that joins 멘탈 [mental] ('mental') and 붕괴 [boong-gwi] ('collapse', 'implosion') referring to a psychological shock one experiences when encountering an unexpected and shocking event. Initially used by StarCraft viewers in 2011. Sometimes written as 멘탈붕괴

3 헐 [hoel] **Exclamation**
 Slang word usually used to show mild form of shock or surprise. (Shucks)

4 대박 [dae-bak] **Exclamation**
 Dae-bak, a common term used to express approval or admiration for something. Similar to "Super cool" or "That's amazing", it can be used flexibly as a noun or adverb.

Like IFEZ Global Center Facebook EVENT

Just click the 'like' button on the IFEZ Global Center facebook page for a chance to win a free gift!

www.facebook.com/ifezglobalcenter



인천상설공연장 www.bibap.in

세상에서 가장 맛있는 공연!

DELICIOUS MUSICAL BIBAP

2014. 2. 20~12. 31 OPEN RUN
 TUE - SAT 8PM Jung-gu Community Center auditorium

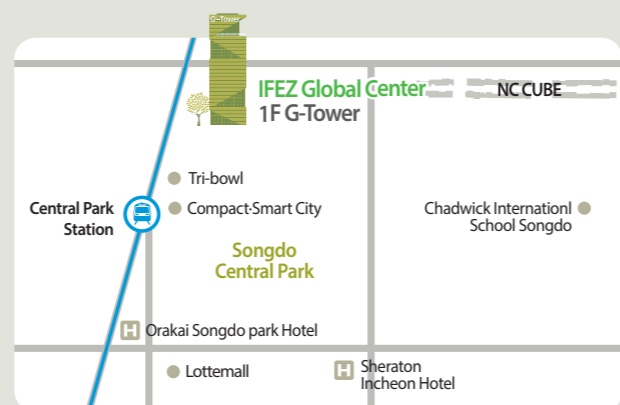
VIP - 50,000won | R seats - 40,000won | S seats - 30,000won

예매 | 인천시립교향악단 1544-1555 문의 | 1644-1248 송강동 최창기 코어디전트 박원길 연출 전문팀
 주최 | 인천광역시 | 후원 | 인천광역시관광협회 기획 | 리안 제작 | CJ E&M PERSONA

IFEZ GLOBAL CENTER Newsletter

Publisher: IFEZ Global Center / Date of Publication: June 30, 2014
 Address: IFEZ Global Center, G-tower 1st floor, Art Center-daero 175, Songdo-dong, Yeonsu-gu, Incheon, Korea / TEL : 82-32-458-5790 FAX : 82-32-458-5797
 Website : <http://global.ifez.go.kr>

www.facebook.com/ifezglobalcenter twitter.com/ifez_global
ifezglobalcenter.blogspot.kr



IFEZ GLOBAL CENTER Newsletter

July, 2014 vol.01

IFEZ Global Center, G-tower 1st floor, Art Center-daero 175, Songdo-dong, Yeonsu-gu, Incheon, Korea | <http://global.ifez.go.kr> | www.facebook.com/ifezglobalcenter | 032-458-5790

RECENT ACTIVITIES

GCF Secretariat Orientation



On January 18, the IFEZ Global Center held an orientation for members of the GCF secretariat. Eleven people working at the GCF attended the event and received useful information through this introductory session on the various support programs available to international residents in Incheon.

Opening Ceremony of Korean Language Class



On January, this year's first semester of Korean language class began at the IFEZ Global Center. On January 13, students participating in the class had a glimpse of the beauty of the Korean language.

The 1st and 2nd Lunchtime Orientation IFEZ Lunchtime Orientation for Foreigners



On March 27, the IFEZ Global Center held its first lunchtime orientation for foreigners living in the IFEZ areas, to provide useful tips on living here, as well as to give attendees time to make new friends. On June 25, the second lunchtime orientation included a guest lecture by Jay K. Park, an American doctor working at the Inha University Hospital. Dr. Park spoke about comparisons between the medical practices and health insurance systems of Korea and other countries.

Lunar New Year



On January 27, Suntree Nursery's kids, wearing a traditional costume known as "Hanbok", paid a visit to the IFEZ Global Center to give a New Year's greeting.

ASEAN Orientation



Orientation for ASEAN College exchange students was held at the IFEZ Global Center on February 13, 2014. About 11 foreign students participating in the ASEAN Millennium Leaders College Student Exchange Program attended the orientation. Information on living in Korea, as well as a brief overview of IFEZ, was provided to them.

A-WEB Opening Ceremony



The opening ceremony of the secretariat of the Association of World Election Bodies (A-WEB) was held at G-tower on April 02. A-WEB is an international organization which aims to strengthen democracies around the world and promote free and fair elections.

Completed the First Semester of Korean Language Class



On April 16, this year's first semester of Korean language class finished successfully. Total of 19 students who completed the program received a course completion certificate and took a group photo.

Temple Cooking Class



The Songdo 2-dong community center offered a "Temple Cooking Class" for foreigners on April 18. A total of twelve participants made three dishes (pumpkin soup, deodeok salad, and mushroom japchae) themselves while under their instructor's guidance, and had an enjoyable time.

Cha Myung-hye

Expat support team manager of IFEZ Authority

ifez Global Center



MOST RECENT & UPCOMING EVENTS

Incheon Asiad Main Stadium, Finally Revealed



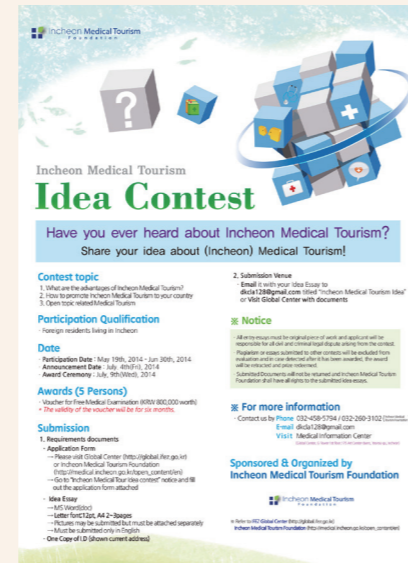
On May 07, the ribbon cutting ceremony was held to celebrate the completion of the Incheon Asiad Main Stadium. Starting at September 19, the eyes and ears of 4.5 billion Asians will be focused on the main events of the 2014 Incheon Asian Games, to be held right here, and which will include the opening and closing ceremonies.

Korea Speed Festival, This July



The Brilliant Motor Festival and Korea Speed Festival (KSF), one of the popular Korean motor sports events, begins this July at the Songdo street circuit. From July 03, this three-day event will provide racing fans with a thrilling experience in the summer heat, as they watch professional and amateur drivers compete for the prize. For more details, please visit <http://www.ksfrace.com>.

Incheon Medical Tourism Idea Contest



Incheon Medical Tourism Foundation is holding an Incheon Medical Tourism Idea Contest.

- **Contest topic**
 1. What are the advantages of Incheon Medical Tourism
 2. How to promote Incheon Medical Tourism to your country
 3. Open topic related Medical Tourism
 - **Participation Date**
May 19th, 2014 – June 30th, 2014
 - **Awards (5 Persons)**
Voucher for Free Medical Service (KRW 800,000 worth)
 - **Announcement Date** : July. 4(Fri.), 2014
 - **Award Ceremony** : July. 9(Wed.), 2014
- ※ For more information Contact us by Phone (032-458-5794 / 032-260-3102) or E-mail (dckla128@gmail.com) or Visit Medical Information Center

Pentaport Rock Festival, This August



The Pentaport Rock Festival, one of the biggest live music festivals in Korea, is set to take place again this summer in Songdo. The highly anticipated festival, which shares the spirits of music, passion, and friendship, will be held for three days (August 1-3).

Q1. Please introduce yourself.

My name is Cha Myung-hae and I have been in charge of the expat support team and the Global Service Center of the IFEZ Authority for the past four years. It's a great pleasure to congratulate the staff of the center on their first issue of the IFEZ Global Center Newsletter. I'm especially grateful to be the first person interviewed of the first issue of this newsletter.

As someone who's been with the Global Center since its birth, it's always a delight to see the beginning of new projects such as this one at the center today. And, even though it's a small step, there's no doubt that it will help the center become a gathering place for both local and foreign residents to share and experience the cultural diversities in their community.

The sole purpose of the Global Center is to provide non-Korean residents with trouble-free living in the IFEZ areas. We hope to ease the challenge of living in a foreign country, by providing a wealth of information and consultation. In comparison to the total population, the foreign community takes up only a mere 1%. Still, it is without doubt that in the near future, IFEZ will become a global hub where foreign residents can feel at home. The Global Center promises to do its best to take on this challenge by helping the foreign community make its home away from home. So feel free to join and participate in the wealth of programs we provide for the expat community. The IFEZ Global Center is always here for you and your participation is always welcomed. Thank you.

Q2. Could you explain the role of the IFEZ Global Center?

The center, which is run by the Incheon Free Economic Zone Authority, is a comprehensive support center for foreign residents in IFEZ. The IFEZ Global Center is a one-stop service center offering assistance in daily living and business activities, and offers administrative service, various educational courses and international exchange events. It also provides basic-to-specialized counselling regarding legal, labor, tax and real estate related issues, in order to help expats settle in IFEZ.

Q3. What programs will the IFEZ Global Center open?

1) The 3rd semester of Korean Language Class (September to December)

• Schedule

Level	Days	Class Hours
Beginner I	MON & WED	16:00 ~ 17:30 (90min.)
Beginner II	MON & WED	17:40 ~ 19:10 (90min.)
Intermediate I	TUE & THU	17:30 ~ 18:30 (60min.)
Intermediate II	TUE & THU	18:40 ~ 19:40 (60min.)
Advanced	TUE & THU	19:50 ~ 20:50 (60min.)

Registration Procedure: Please fill in the application form, available at the IFEZ Global Center or <http://global.ifez.go.kr>, and send it in an email entitled "Korean Language Course" to sina4205@iirf.or.kr.

2) **Traditional Cultural Experience Program (in October)**: This is a once-a-year program which provides non-Koreans with a traditional cultural experience. Participants learn Korean cooking, have a

chance to wear traditional clothes, and learn Korean etiquette.

3) **IFEZ Lunchtime Orientation (in June, September, November)**: Orientation for foreigners living in the IFEZ areas. Participants will get useful information and can make suggestions, while having an opportunity to make new friends. Light sandwiches and snacks provided.

4) **Special Cooking class for Korean Language Class students (in July)**: This cooking class, which offers instruction in temple cooking, is offered exclusively to students taking Korean Language classes at the IFEZ Global Center. This special class takes place at the Songdo 2-dong Community Center a few weeks before the end of each program.

5) **Special Buddy Program (From June)**: A language exchange program where foreigners can learn Korean with a buddy in exchange for lessons in his or her own language.

6) **Christmas Party (in December)**: At this party, visitors to the IFEZ Global Center can make their own "Wish-Card", watch free movies and enjoy light refreshments. Also, an award ceremony for special buddy-program participants will be held.

IFEZ Global Center

- **Location** : IFEZ Global Center, G-tower 1st floor, Art Center-daero 175, Songdo-dong, Yeonsu-gu, Incheon 406-840
- **Directions** : From Central Park St. (Incheon Line 1) Exit 4 walk 295m to G-tower
- **Tel** : 032-458-5790 / **Fax** : 032-458-5797
- **Business Hours** : Mon.- Fri. 09:00-18:00